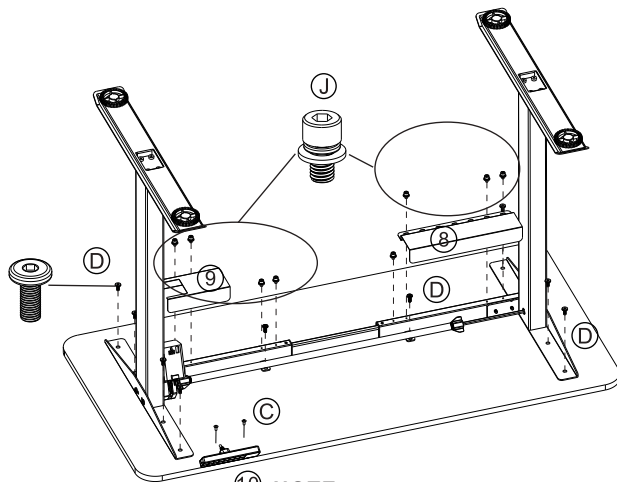


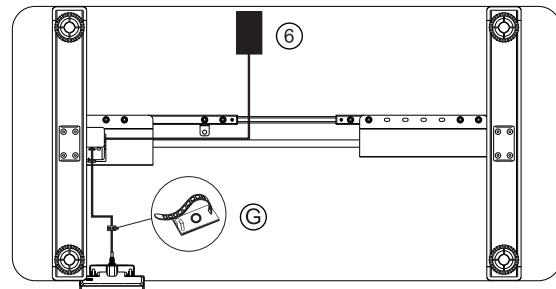
STEP 05



NOTE:
The Handset can be fixed on the left or right side of the table top.

- ⑧ Cover Plate A *1
- ⑨ Cover Plate B *1
- ⑩ Handset *1
- Ⓒ M4×16 Screws *2
- Ⓓ M6×14 Screws *10
- Ⓙ M6×10 Screws *8

STEP 06



- ⑥ Power Cord * 1
- Ⓖ Cable Pad * 5

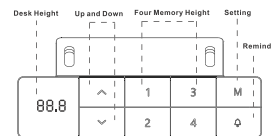
READY TO USE

Before Plugging the table into the outlet, make sure that

- The lift columns are level and set at the lowest position.
- All the screws are tightened, to avoid the desk making noise and wobbling.

Activate the desk by following the next steps.

- Please press button down and hold for 10-15 seconds until it stutters and beeps.
- Release the button, then your desk is ready to use.



OPERATION GUIDE

1. Memory desired height

- Press button "M", display show "S-" with flash.
- Press number and set desired position.

2. Advanced Safety feature- lock and unlock the table.

- Press button up and down at same time for 5 seconds, display "Loc"
- All single button will be inactive and table will be unable to move.
- Pressing button up and down together will unlock the keypad and release the Loc

3. Reset the table

When display show Error code or R5t, Please reset the table.

Do the reset:

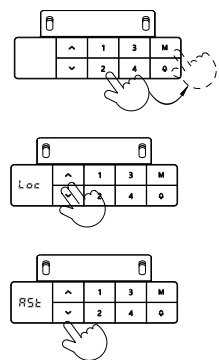
- Press the DOWN button and hold it for 10 to 15 seconds until the table moves down and up slightly.

4. Overload Hot

- When the display shows HOT, unplug the power cord from the control box. Unplug the cable that links the keypad to the control box. Wait 30 seconds and plug all the cables in again.

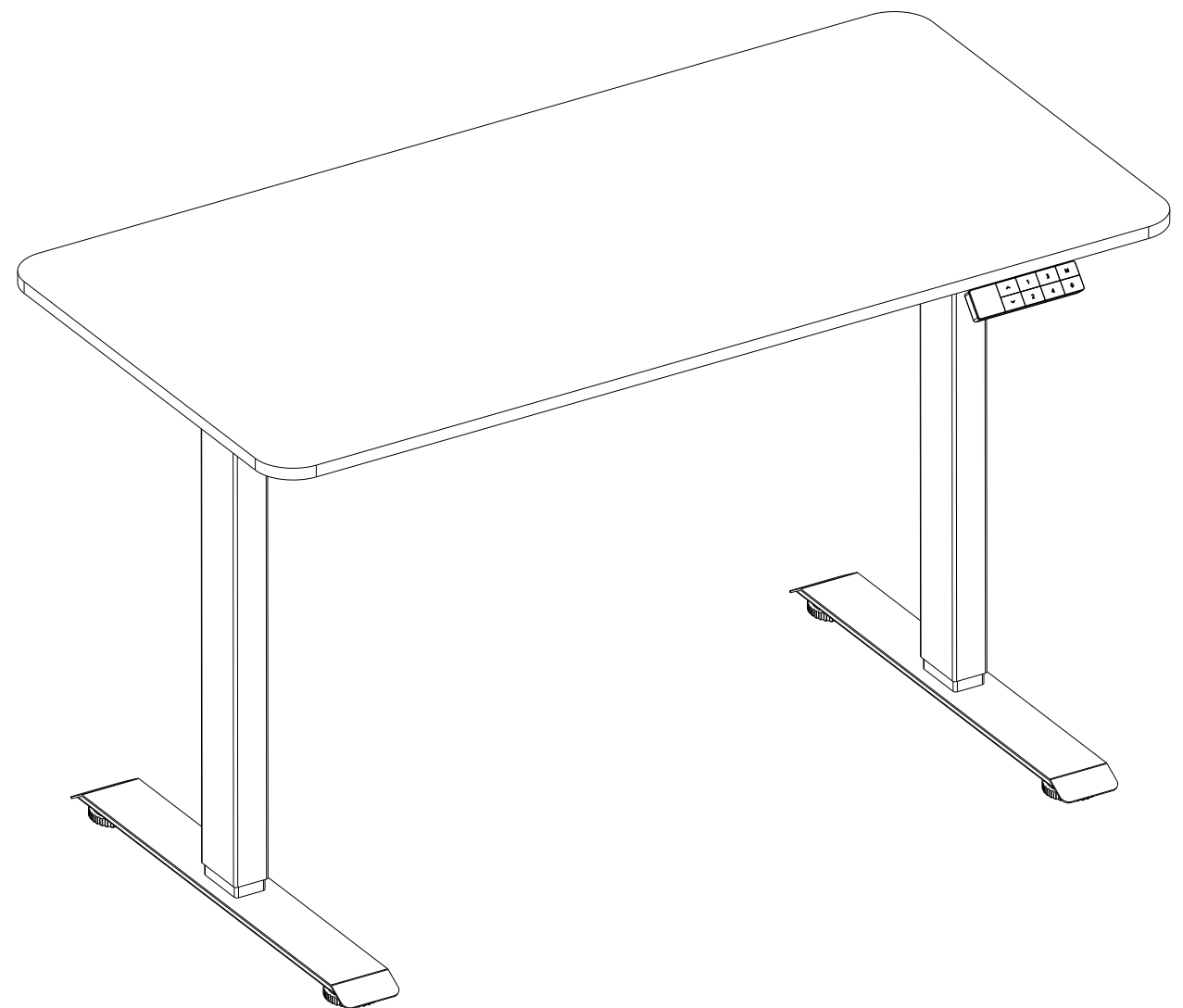
Reason: Overload from constantly operating the table.

Allow the controller to cool down for a few minutes before continuing work.



Press by holding 10-15 seconds

HEIGHT ADJUSTABLE DESK
ASSEMBLY INSTRUCTIONS



SLOUCH.

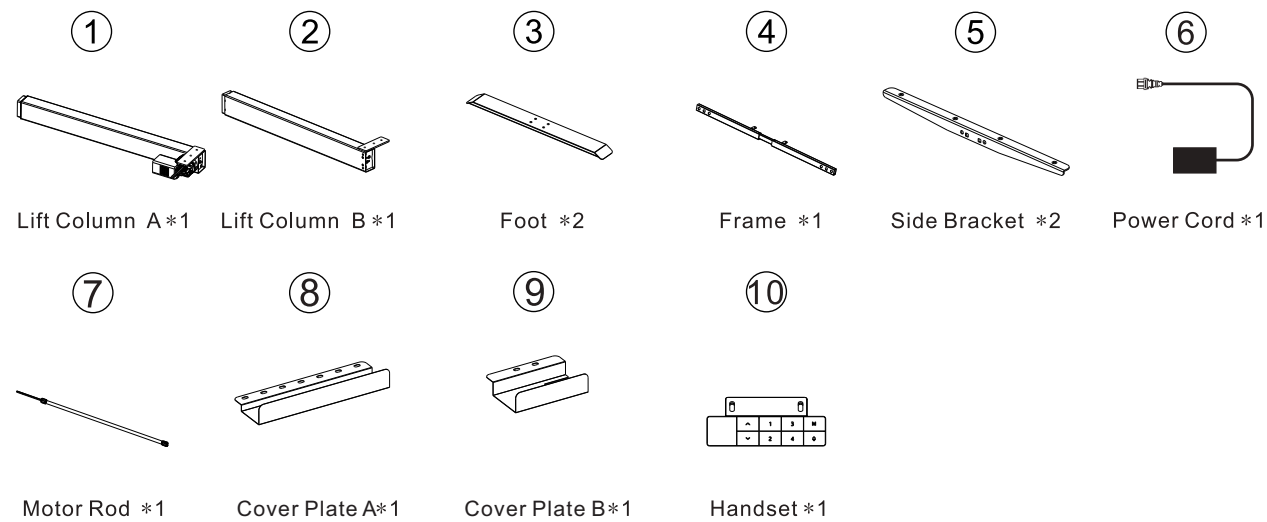
INSTALLATION TIPS



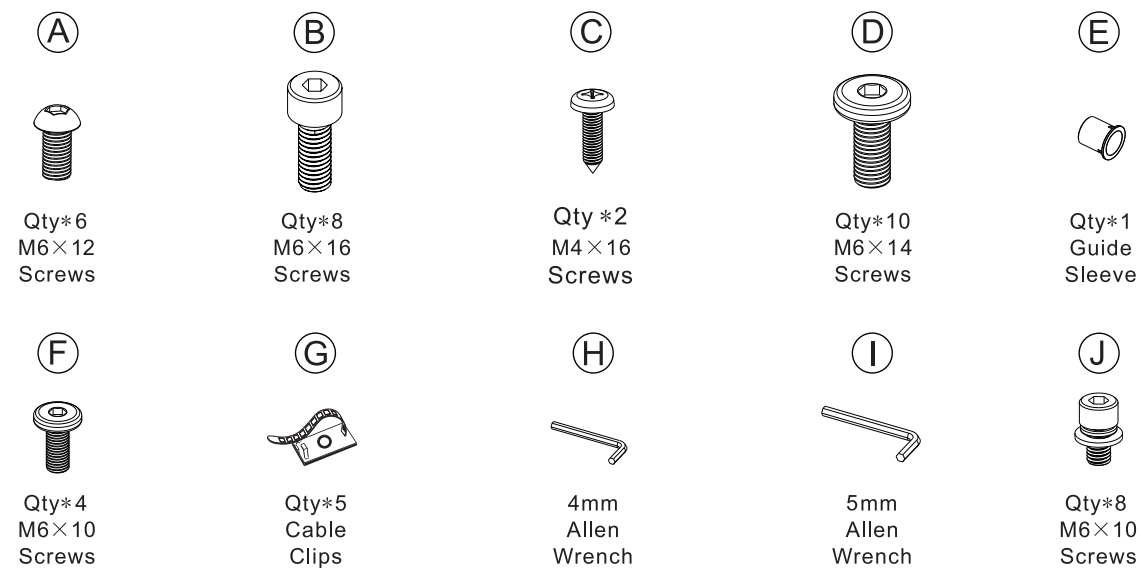
Please don't tighten the screws completely and go back later for a final tightening of all the screws after pieces are aligned with each other .

Lay a mat or old blanket out to assemble onto so the floor and the furniture doesn't get scratched or damaged during building.

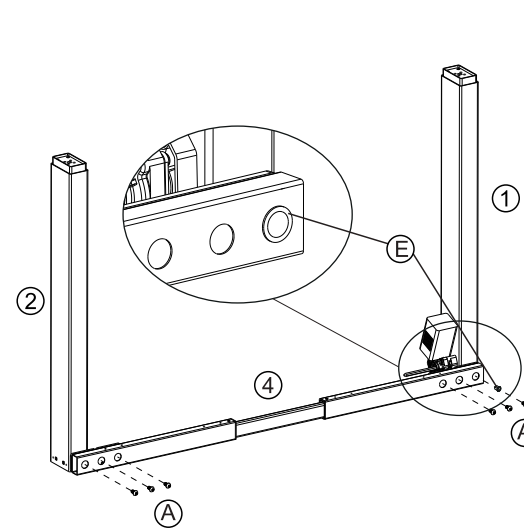
PART LIST



ACCESSORY KIT

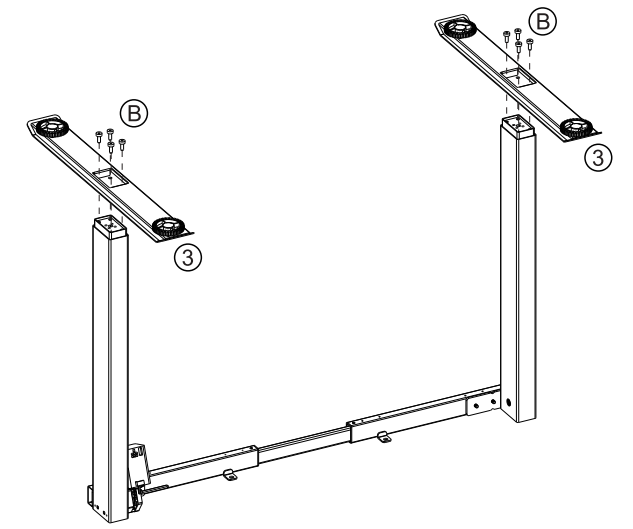


STEP 01



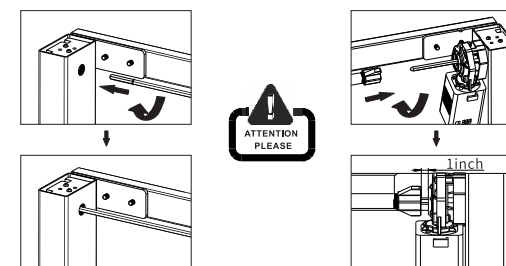
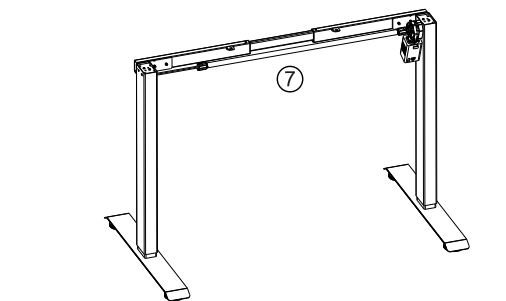
- | | | |
|---|---------------|-----|
| ① | Lift Column A | * 1 |
| ② | Lift Column B | * 1 |
| ④ | Frame | * 1 |
| A | M6×12 Screws | * 6 |
| E | Guide Sleeve | * 1 |

STEP 02



- | | | |
|---|--------------|-----|
| ③ | Foot | * 2 |
| B | M6×16 Screws | * 8 |

STEP 03

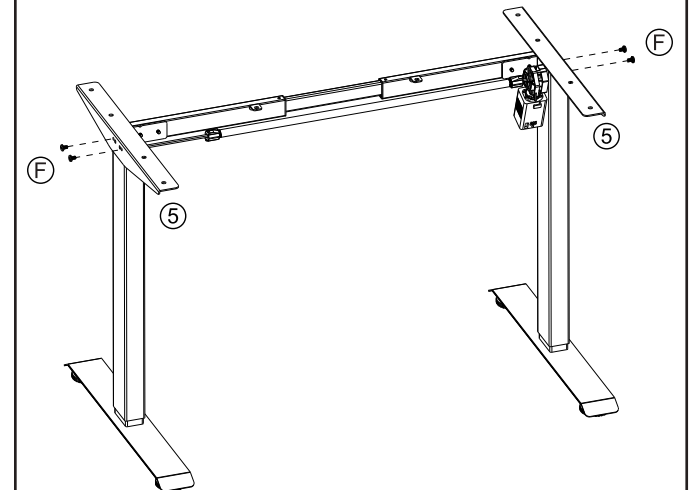


Please insert motor rod into the gear box completely, under the help of cir clip.

Please keep **1inch** distance at least between the motor rod and motor.

- | | | |
|---|-----------|-----|
| ⑦ | Motor Rod | * 1 |
|---|-----------|-----|

STEP 04



- | | | |
|---|--------------|-----|
| ⑤ | Side Bracket | * 2 |
| F | M6×10 Screws | * 4 |