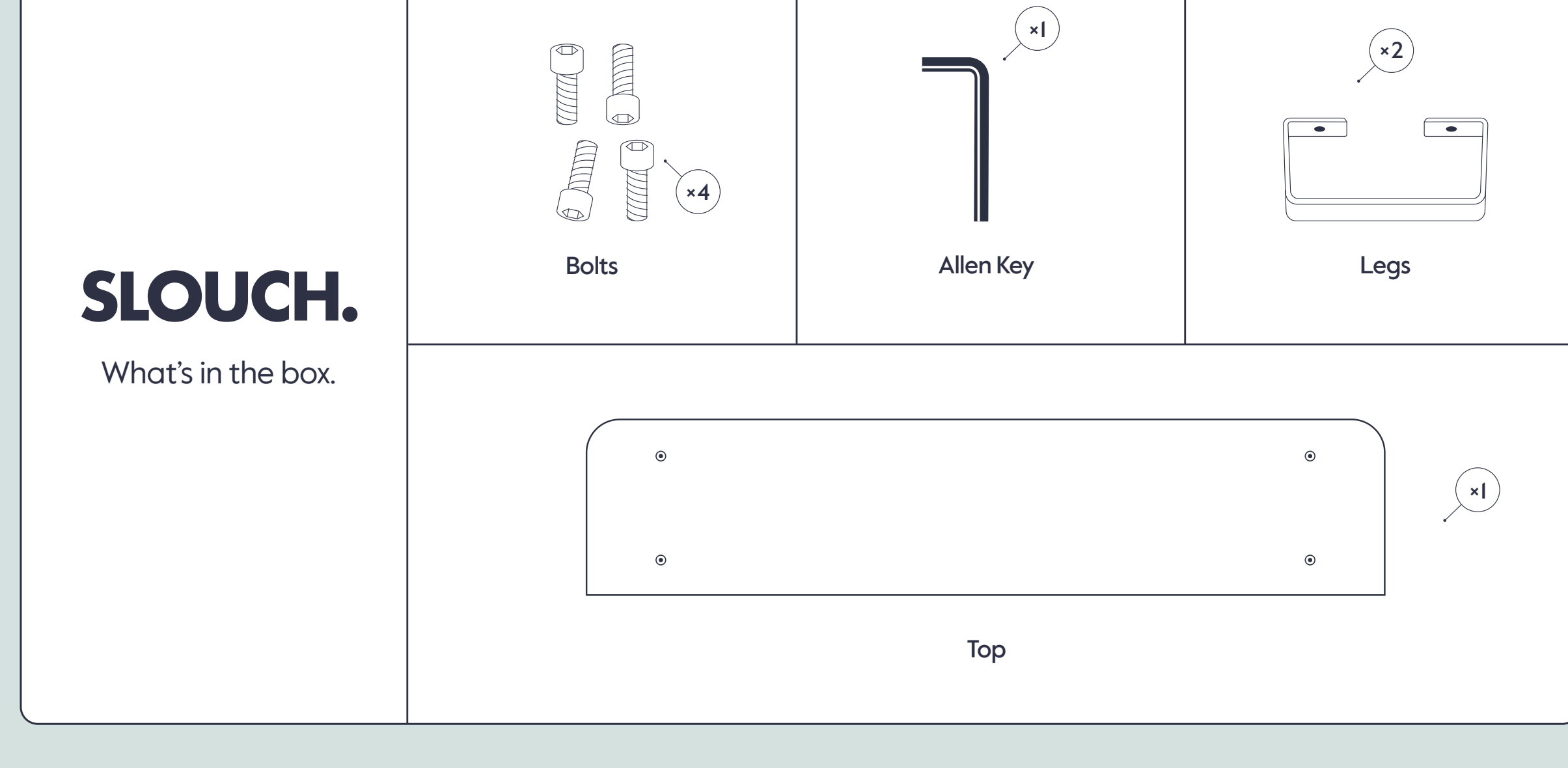


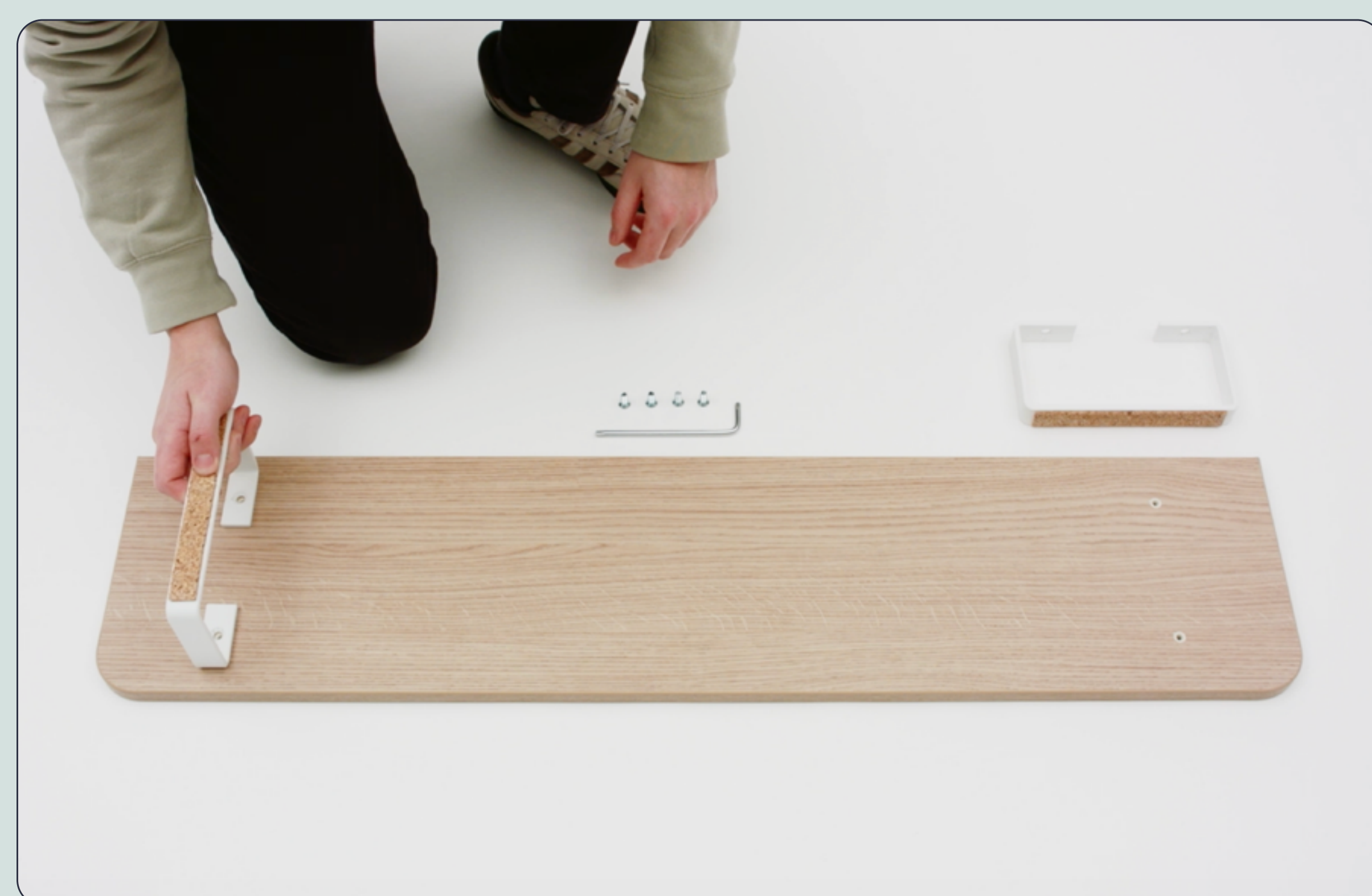
SLOUCH.

Let's assemble your monitor stand



Step One

Align the leg with top.



Step Two

Align the two holes and insert the bolts – tighten with the allen key supplied. Once one side is done, repeat on the other.



Step Three

It's time to set it all up...
Add the monitor stand to your desktop and enjoy the perfect view every time!



We've got your back
SLOUCH.

Important Information

—
The product should only be assembled and used on firm, level ground.

—
Keep small parts out of reach of children.

—
Ensure the product is fully assembled as illustrated before use.

—
Check the pack and make sure you have all the parts listed.

—
Check all screws or bolts are tightened and inspected regularly.

—
Do not overtighten screws or bolts.

—
Do not stand on the product.

—
Do not use power tools to construct as overtightening and part failure may occur.

—
If in doubt ask

Email— customer@slouchonline.com

SLOUCH.